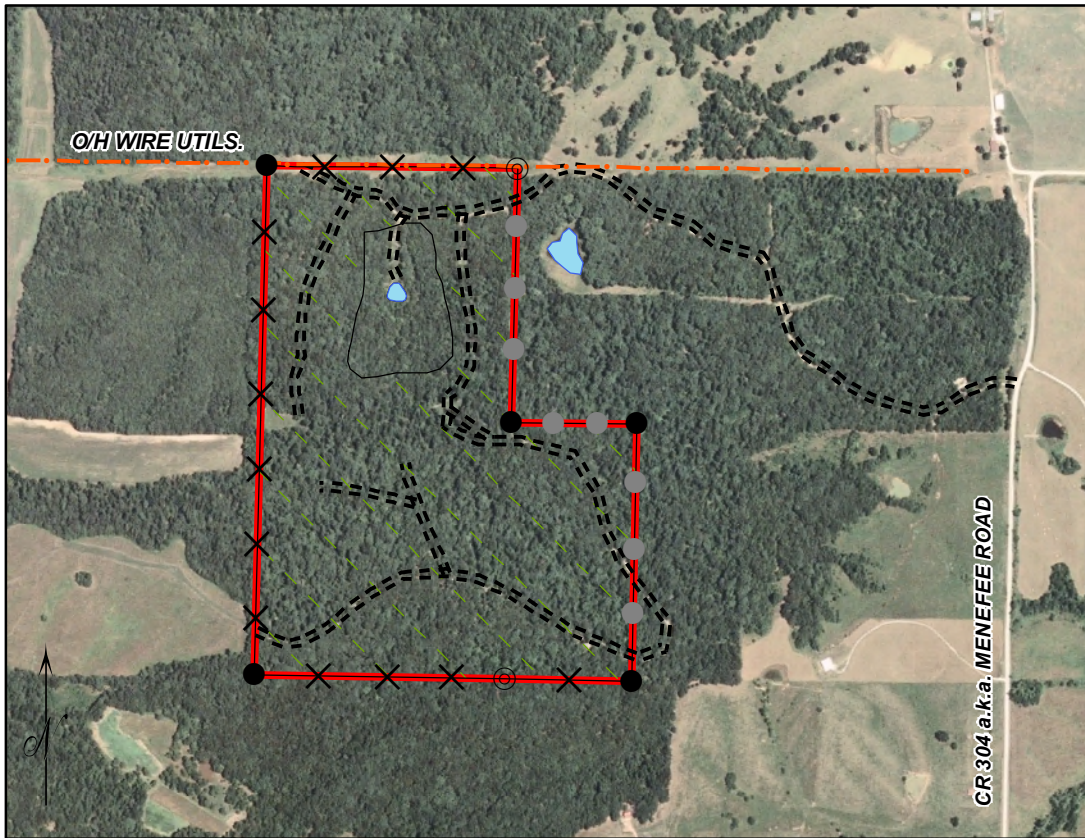


MAP OF THE MICHIGAN TIMBER SALE

ON LANDS BELONGING TO
KEN FEUSSE
 SITUATE IN CHARITON COUNTY, MO
 DESCRIBED AS
 A tract of land situate in the North half of
 Section 8, Township 56 North, Range 17 West



1 inch equals 1,000 feet

Sale area = 90 acres per Arc Map GIS
 Property area = 100.1 per Map Ref 1 and GIS

Map Ref 1: Survey Map by Edward A. Cleaver
 Dated 12/21/2005, Order number- 7796

Notes: Property lines are marked by intermittent
 purple blazes and pink flagging.

Legend

Property boundary	Metal Posts
Sale Area	Fence
Roads	Monuments
O/H utilities	Corner post
Pond	Set rod-yellow cap



Clearwater Forest Consultants, LLC
 PO Box 176/105 North Main Street
 Piedmont, MO 63957-9574
 www.clearwaterforestconsultants.com
 (573) 223 7010